



Medina College

Year 11 Support

2025-2026





Rich Wiseman
Director of Progress
and Attainment



Sian Bristow
Head of Year 11



Sophie Norcutt
Examinations Officer



Mat Thorne
Faculty Lead
Communications



**Kamelia
Howells**
Faculty Lead
Numeracy



Paul Clarkson
Faculty Lead
Physical
Sciences



Nick Binfield
Faculty Lead
Social Sciences



Sarah Cox
Faculty Lead
Creative Arts
& Technology

The Year Ahead

How to Prepare

Additional Support

Next Steps

Year 11 Support

The Year Ahead

The '*Year*' Ahead

September 11th
November 5th
November 27th

Year 11 parents' evening
Year 11 trial exams 1
Year 11 trial results day 1

2026

February 11th
February 24th
March 16th
March 19th
May 5th
June 24th
August 20th

Year 11 parents' evening
Year 11 trial exams 2
Final practical exams begin
Year 11 trial results day 2
Final written exams begin
Final date written exams can take place (contingency)
GCSE results day 2026

118

days until the GCSE written exams begin

How to Prepare

How to prepare

What will impact your final grade?

Attendance

95%	Very good chance of 9-4 grades
94%	Good chance of 9-4 grades
92%	Fair chance of 9-4 grades
90%	Less than 50% chance of 9-4 grades
88%	Less than 35% chance of 9-4 grades
<85%	Less than 30% chance of 9-4 grades

How to prepare

What will impact your final grade?

Attendance

Revision

*How do I
revise?*

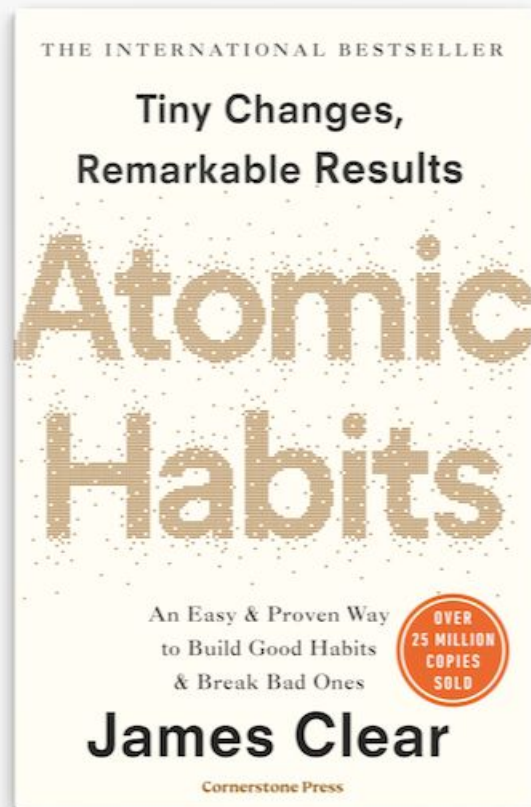
How do I revise?

Start as early as you can

How do I revise?

*'If you can get **1 percent better** each day for one year, you'll end up **thirty-seven times better** by the time you're done.'*

James Clear
Atomic Habits



How do I revise?

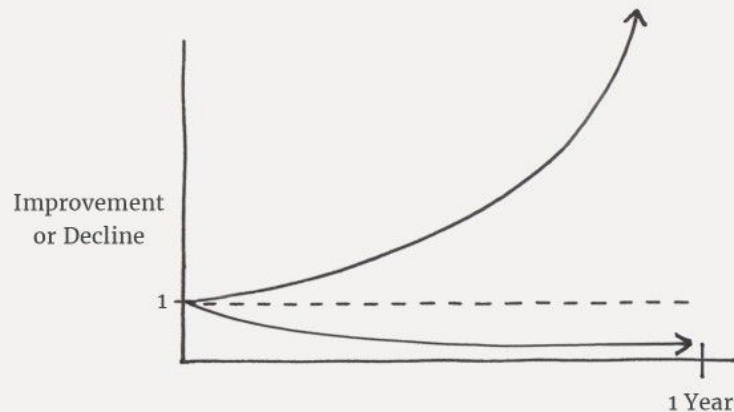
$$1^{365} = 1$$

$$1.01^{365} = 37.78$$

The Power of Tiny Gains

1% better every day $1.01^{365} = 37.78$

1% worse every day $0.99^{365} = 0.03$



How do I revise?

There's a common myth that GCSE success comes from last-minute cramming or extreme revision hours.

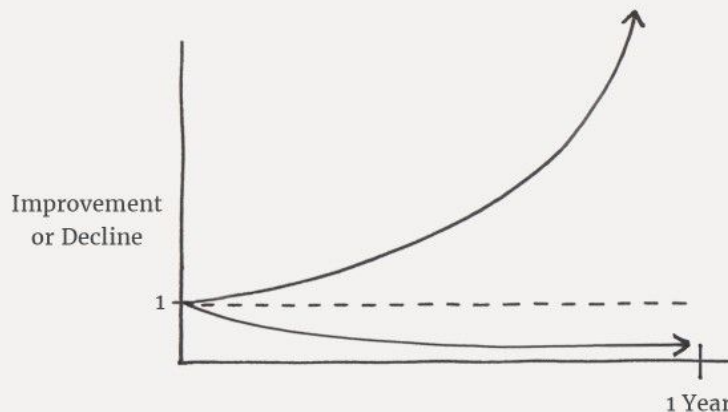
In reality:

10–30 minutes every day
focused on the right things
over several weeks

...beats long sessions every time.

The Power of Tiny Gains

$$\begin{array}{ll} 1\% \text{ better every day} & 1.01^{365} = 37.78 \\ 1\% \text{ worse every day} & 0.99^{365} = 0.03 \end{array}$$



How do I revise?

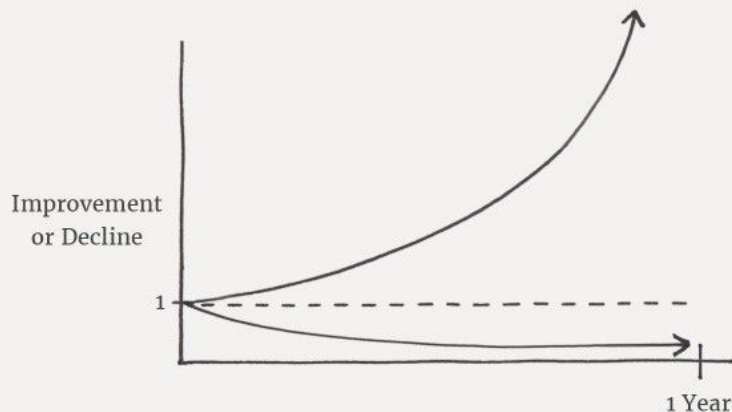
GCSE success isn't
about heroic effort.

It's about
consistency.

The Power of Tiny Gains

1% better every day $1.01^{365} = 37.78$

1% worse every day $0.99^{365} = 0.03$



Revision Timetable

Little and often

Make it **realistic**

Build in **rest breaks** and time for other interests, socialising, exercise etc.

Balance the time between different subjects

Revision

* = revise if possible
= = no revision/break

TIME	MON	TUES	WED	THURS	FRI	SAT	SUN
8:30-4:30	school	school	school	school	school	*	*
4:30-5:00	media	chemistry	media	maths	english	maths*	=
5:00-5:30	english	chemistry	media	maths	english	maths*	=
5:30-6:00	=	=	maths	english	media	=	=
6:00-6:30	english	english	=	=	=	=	=
6:30-7:00	maths	english	=	=	chemistry	=	=
7:00-7:30	=	=	english	chemistry	=	*	biology
7:30-8:00	=	=	physics	chemistry	=	*	media
8:00-8:30	maths	biology	=	=	chemistry	english	=
8:30-9:00	maths	maths	maths	biology	physics	english	=
9:00-9:30	=	=	=	=	=	=	=
9:30-10:00	biology	maths	biology	biology	phys*	=	=
10:00-10:30	media	physics	biology	media	phys*	=	=

BITESIZE

[Home](#) | [Learn](#) | [Study support](#) | [Careers](#) | [Parents](#) | [Trending](#) | [My Bitesize](#)[More](#)

How to revise: Planning and timetables

Part of [Study support](#)[Save to My Bitesize](#)

How to plan your time with revision timetables



Our Mind Set coaches talk you through some top tips to help you prepare for your 2024 exams.

As parents, what can we do to help?

- **Provide a space to study, free from distraction**
- **Provide supervision - get involved!**
- **Provide healthy snacks and drinks to keep them going**
- **Provide support and encouragement**

*...but **how** do
I revise?*

How do I revise?

Mindmaps



How do I revise?

Checklists

Maths GCSE 2024 Revision Checklist
Edexcel (Higher)



NUMBER	ALGEBRA	GEOMETRY	PROBABILITY AND STATISTICS
HCF/LCM	Expanding/Simplifying/Factorising	Areas of 2-D Shapes	Probability from a Table
Product of Prime Factors	Substitution	Angles in Parallel Lines	Relative Frequency
Fractions/Decimals/Percentages	Expanding Double and Triple Brackets	Angles in Polygons	Set Theory and Venn Diagrams
Fraction Calculations	Factorising Quadratics	Plans and Elevations	Probability Trees
Recurring Decimals	Changing the subject of an equation	Construction and Loci	Probability Equations
Laws of Indices	Sequences including quadratic/geometric	Circles - area/circumference/sectors/arcs	Two-Way Tables
Negative and Fractional Indices	Straight Line Graphs	Volumes and Surface Areas	Averages
Standard Form	Quadratic/ cubic/reciprocal/ exp graphs	Cylinders, Cones, Prisms and Spheres	Grouped Frequency Tables
Percentages - including reverse	Circles - equations and tangents	Circles - equations and tangents	Scatter Graphs
Compound Interest and Depreciation	Solving quadratics	The Four Basic Transformations	Frequency Polygons
Ratios and Proportion (sharing etc.)	The Quadratic Formula	Bearings	Pie Charts
Upper and Lower Bounds	Completing the Square	Similar Shapes	Cumulative Frequency Graphs
Sets and Venn Diagrams	Inequalities - Linear and Quadratic	Congruent Triangles	Interquartile Range
	Simultaneous Equations linear/quadratic	Circle Theorems	Box Plots
	Iterations	Vectors	Averages from a Stem and Leaf Diagram
	Functions	Geometric Proof	Histograms
	Algebraic Fractions - simplifying/solving	Pythagoras - 2-D and 3-D	
	Graph Transformations	SOHCAHTOA	
	Differentiation	Sine, Cosine and Area Rules	
	Forming and solving equations	Trig Graphs	
	Direct and Indirect Proportion		
	Distance-Time and Velocity-time Graphs		

**Don't spend
time revising
what you
already know**

How do I revise?

Flashcards

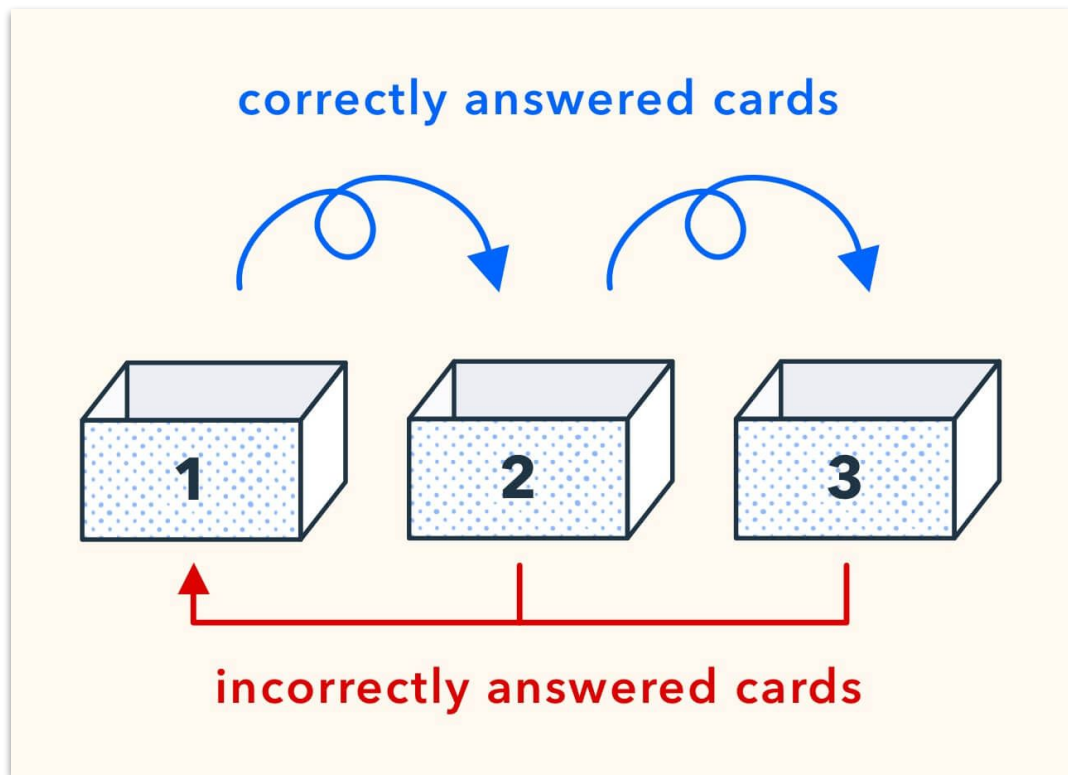


How do I revise?

Flashcards

The Leitner Method

- One question per card
- All cards start together
- **Right answer**
- card moves forward
- **Wrong answer**
- card goes back
- Hard topics appear **more often**
- Easy topics appear **less often**



How do I revise?

Past papers

Please check the examination details below before entering your candidate information

Candidate surname		Other names	
Centre Number		Candidate Number	
Pearson Edexcel Level 1/Level 2 GCSE (9-1)			
Thursday 4 June 2020			
Morning (Time: 1 hour 30 minutes)		Paper Reference 1MA1/2F	
Mathematics Paper 2 (Calculator) Foundation Tier			
You must have: Ruler graduated in centimetres and millimetres, protractor, pair of compasses, pen, HB pencil, eraser, calculator. Tracing paper may be used.			Total Marks

Instructions

- Use **black** ink or ball-point pen.
- **Fill in the boxes** at the top of this page with your name, centre number and candidate number.
- Answer **all** questions.
- Answer the questions in the spaces provided – *there may be more space than you need.*
- You must **show all your working**.
- Diagrams are **NOT** accurately drawn, unless otherwise indicated.
- **Calculators may be used.**
- If your calculator does not have a π button, take the value of π to be 3.142 unless the question instructs otherwise.



Information

- The total mark for this paper is 80
- The marks for **each** question are shown in brackets – *use this as a guide as to how much time to spend on each question.*

Advice

- Read each question carefully before you start to answer it.
- Keep an eye on the time.
- Try to answer every question.
- Check your answers if you have time at the end.

Turn over ►

P62275A

©2020 Pearson Education Ltd.
1/1/1/1/




Pearson

How do I revise?

Revision guides

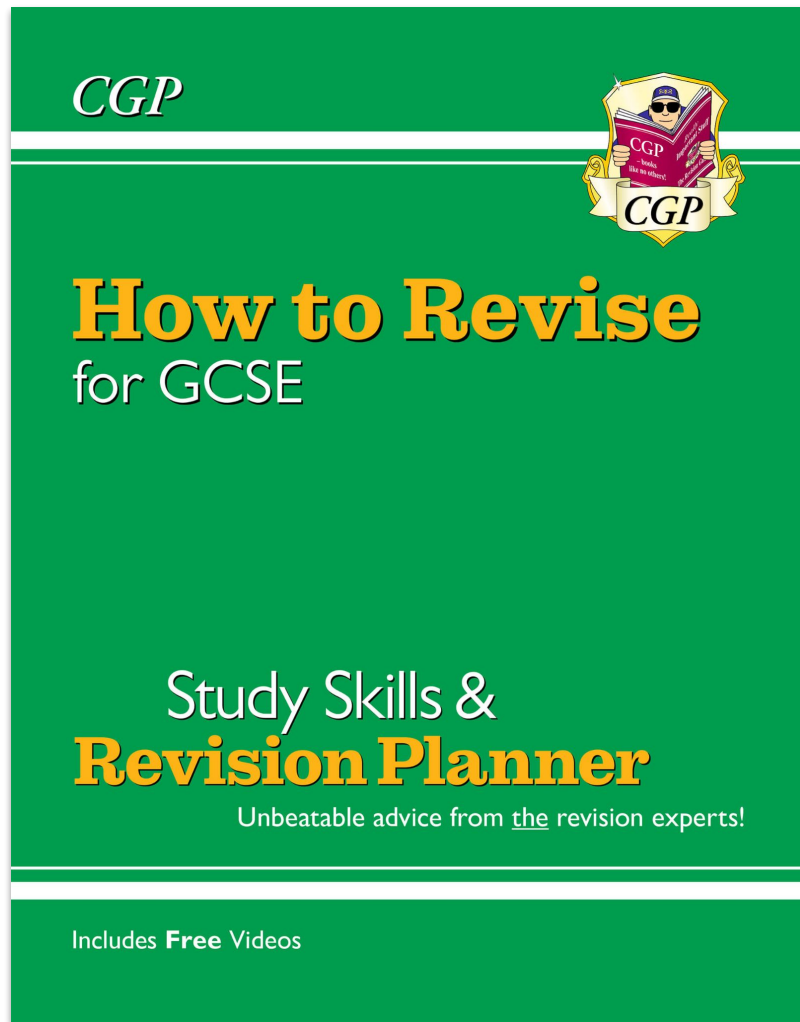
Revision guides are available to order through the Arbor Parental app - School shop

The screenshot displays the Arbor Parental app interface. At the top, a dark navigation bar includes the 'Medway College' logo, a search bar with the text 'Search or ask...', and a user profile icon labeled 'Arbor'. Below this, a breadcrumb trail reads 'School / Payments / School Shop / School Shop Products'. The main content area is titled 'School Shop' and features two tabs: 'Active Products' (selected) and 'Inactive Products'. A table lists various revision guides and workbooks, with the 'A2 Physics Revision Guide (PATB63)' highlighted in light blue. The table has a 'Product name' header and a search bar. The left sidebar contains icons for Home, Favourites, Notifications, My Calendar, Emergency Alert, Help & Learn with Arbor, and Sign Out.

Product name
A Christmas Carol Revision Guide
A2 Biology Revision Guide (BATB63)
A2 Physics Revision Guide (PATB63)
An Inspector Calls Revision Guide
AS & A Level Geography Revision Guide
AS & A2 Biology Workbook
AS & A2 Chemistry Revision Guide (CRATB72)
AS & A2 Chemistry Workbook (CRAO71)
AS & A2 Physics Workbook
AS Biology Revision Guide (BATB53)
As Level Physics Revision Guide (PATB53)
BTEC Sports T-Shirts Adult Sizes
BTEC Sports T-Shirts Youth Sizes

How do I revise?

- Different methods of revision
- Effective study tips and techniques
- Online resources, such as downloadable planners and editable revision timetables



The 'Year' Ahead

September 11th

November 5th

November 27th

Year 11 parents' evening

Year 11 trial exams 1

Year 11 trial results day 1

2026

February 11th

February 24th

March 16th

March 19th

May 5th

June 24th

August 20th

Year 11 parents' evening

Year 11 trial exams 2

Final practical exams begin

Year 11 trial results day 2

Final written exams begin

Final date written exams can take place (contingency)

GCSE results day 2026

How to prepare

What will impact your final grade?


Attendance

Revision


Engagement

Additional Support

Additional Support

 Medina College
ASPIRE AND ACHIEVE

[Home](#) [About Us](#) [Medina Life](#) [Teaching and Learning](#) [News and Events](#) [Contact Us](#)




[Home](#) → [Teaching and Learning](#) → [Year 11 Support](#)

Year 11 Support

Revision Support

To support Year 11 with their upcoming GCSE examinations, a revision support booklet has been put together by our teaching staff. This document contains information for each subject on how to revise, which topics to focus on and various links to useful resources. Please access this document at the link below.

[YEAR 11 REVISION BOOKLET](#) 

Also in this section

- [Teaching and Learning Overview](#)
- [Curriculum](#)
- [PSHE](#)
- [Assessment](#)
- [Year 9 Pathways](#)
- [Year 11 Support](#)**

English Language

Paper 1: Explorations in Creative Reading and Writing - 45 minutes
Paper 2: Writers Viewpoint and Perspectives - 1 hour

Paper	Revision Priorities	Suggested Activities
Paper 1	Reading skills	GCSE Pod Tips for exam success: the 4 reading questions on this page New GCSE English Language Practice CGP revision guide: Pages 3-4
Paper 1	Writing skills	Creative writing (6 pods taking both narrative and description, advanced techniques. There are quizzes to test that you know the techniques) New GCSE English Language Practice CGP revision guide: Page 5, P
Paper 2	Reading skills	Tips for exam success (8 pods guiding you through the paper.) New GCSE English Language Practice CGP revision guide: Pages 6-7
Paper 2	Writing skills	Transactional writing (3 pods giving skills necessary to write formal letters. There are also 12 check and challenge questions to know the relevant content.) New GCSE English Language Practice CGP revision guide: Page 8, P
Paper 1 & 2	Writing skills	Basic writing skills (These 4 pods including sentence structures, proofreading skills. There are tests that you know the relevant content.) Spelling, punctuation and Grammar: the basics of spelling, punctuation, 50+ check and challenges to content.)

You should also be meeting your daily goal for English
Other useful links: [AQA papers and markscheme](#)

Mathematics (Higher)

Paper 1: Non calculator - 1 hour 30 minutes
Paper 2: Calculator - 1 hour 30 minutes
Paper 3: Calculator - 1 hour 30 minutes

Paper	Revision Priorities	Suggested Activities
Paper 1, 2 & 3	Individual topics	Use the list of topics that the most recent mock exam should focus on. The topics link to the Sp practice and test your knowledge
Paper 1, 2 & 3	Higher Maths topics	Watch the videos on the worksheet/quiz and then website. The list of topics have video find what you need to cover Don't forget to use the CG
Paper 1, 2 & 3	Exam Structure	Use the link to the specific understanding of what you Practising exam style questions

Science (Biology)

Paper 1: 1 hour 45 minutes
Paper 2: 1 hour 45 minutes

Suggested Activities: Watch the videos or use you Go to [GCSEPod](#) and take the quiz

Paper	Revision Priorities	Suggested Activities
Paper 1	Cell Biology - What's in Cells	YouTube: Prokaryotes YouTube: Struc YouTube: Struc YouTube: Cell YouTube: Micro YouTube: Light YouTube: Culture
Paper 1	Cell Biology - Cell Division	YouTube: Gen YouTube: Stem
Paper 1	Cell Biology - Transport in Cells	YouTube: Diffu YouTube: Exch YouTube: Osm YouTube: Osm YouTube: Activ
Paper 1	Organisation - Principles of Organisation	YouTube: Cells
Paper 1	Organisation - Enzymes	YouTube: Struc YouTube: Effect YouTube: Enzy YouTube: Dige YouTube: Food
Paper 1	Organisation - Circulatory System	YouTube: Struc YouTube: The YouTube: Circu YouTube: Com
Paper 1	Organisation - Non-Communicable Diseases	YouTube: Non YouTube: Risk YouTube: Cor YouTube: Can
Paper 1	Organisation - Plant Tissues, Organs & Systems	YouTube: Plant YouTube: Tran YouTube: Tran YouTube: The

French



Paper 1: Listening - Foundation 35 minutes. Higher 45 minutes
Paper 2: Speaking - Foundation: 9 minutes + preparation time.
Higher 12 minutes + preparation time
Paper 3: Reading - Foundation 45 minutes. Higher 1 hour
Paper 4: Writing - Foundation 45 minutes. Higher 1 hour

Paper	Revision Priorities	Suggested Activities	Information Links
Paper 1, 2, 3 & 4	Practice your listening, speaking, reading and writing skills Language skills - 12 GCSE pods talking about basics and 'need to know' language. Grammar - 3 GCSE pods talking about the different tenses. Topics - topics covered can be found in GCSEPod under the following titles- Identity and culture, local/national/ international and global, current and future study.	Watch the GCSEPod videos and then test your knowledge on Quizlets New GCSE French Complete Revision and Practice (topic based but includes language skills and grammar points) Exam Practice Workbook. (Exam-style reading, writing and listening questions relating to topics -there are plenty of grammar questions to check you are exam ready.	GCSEPod: Language Skills GCSEPod: Grammar GCSEPod: Topics Top revision tips for French Quizlets
Paper 1	Learn, Know, Predict! You can predict the kind of words you'll hear in the exam -learn/revise those words in advance. For example: what words could come up on a listening question about the environment? Do you know the words traffic, global warming etc. Opinions: Knowing adjectives and opinion words are crucial to the listening exam - you will get a lot of positive/ negative questions and if you don't know your opinion words e.g. boring, exciting, interesting, funny, you won't be able to answer these questions.	Use Blooket and Quizlets to practice and test your knowledge. News in French (Foundation students try beginner, Higher students try Intermediate)	Blooket: French adjectives Blooket: Connectives, time, references and opinions Blooket: Small but important words in French 1jour1actu (News in French) News in French Quizlets
Paper 2	Practise SPEAKING aloud in French A.D.I! Answer, Development (give and explain opinions), Initiative (change tense)	Practise by saying aloud the answers to each of the questions in the speaking booklet. Model answers and corrected answers are in your books.	GCSEPod: Speaking

Additional Support

Online resources

The school subscribes to:



THIRD SPACE
LEARNING

Additional Support

Support Sessions

- The library is prioritised for Year 11 students to study every lunch time
- Targeted subject sessions are running across the week
- Additional intervention days are running during the half term holidays

TUESDAY	Geography (Before school)	NBI	H7
	Science	NOS	S3
	Science	PCL	S5
	Child Dev	JPI	S1
	English	ACO	L8
	Drama (week B only)	ERO	Drama Studio
WEDNESDAY	Science	PCL	S3
	Food Tech	KCO	C5 or C7
	Business	NBI	H7
	Design Tech	CLA	C5
THURSDAY	Geography (Before school)	NBI	H7
	Science	NOS	S5
	Science	SLL	S6
	Art/Graphics	TST	C16
	Art/Photo	DMO	C12
	History	IHA	H10
	Design Tech	CLA	C5
FRIDAY	Geography	MJO/NBI	H6

Next Steps



THE ISLAND VI FORM

Prospectus 2026

Next steps

Start looking at the post-16 options

- Courses available
- Entry requirements



**The
Isle of Wight
College**

Next steps

Entry requirements

GCSEs are **level 2** qualifications

A levels are **level 3** qualifications

GCSE and Vocational Qualification Grades

Old GCSE Grading Structure		New GCSE Grading Structure	Vocational Qualification Grading Structure BTEC, First Awards, Technical Awards
A*		9	Level 2 Distinction*
A		8	
B		7	Level 2 Distinction
		6	
	Strong Pass (DfE)	5	Level 2 Merit
C			Level 2 Pass
	Standard Pass (DfE)	4	
D		3	
E		2	Level 1 Pass †
F		1	
G			
U		U	U

† Some qualifications additionally divide level 1 grades into Pass, Merit, and Distinction

Next steps - Exams Information

We ask students to make sure they know:

- Date
- Exam
- Time
- Room
- Centre Number
- Seat Number
- Candidate Number

Timings

Morning exams start at **9.00am** - morning lines area by **8.45am**

Afternoon exams start at **1.15pm** - morning lines area by **1pm**

If they know they are going to be late, we ask them to contact the school as soon as possible

Next steps - Exams Information

Routines:

Silence

Empty pockets

No communication

talk, make eye contact, signal to, engage with

Malpractice could cost you the marks for that paper, that subject, or that season of exams

We do have to, and will report all malpractice to the exam boards to ensure the integrity of our exam centres

AQA

City & Guilds

CCEA

OCR

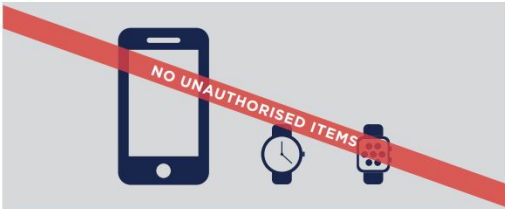
Pearson

WJEC

JCQ
CIC

**NO MOBILE PHONES
NO WATCHES**

NO POTENTIAL TECHNOLOGICAL/WEB
ENABLED SOURCES OF INFORMATION



Possession of unauthorised items, such as a mobile phone
or any watch, is a serious offence and could result in

DISQUALIFICATION

from your examination and your overall qualification.

AQA

City & Guilds

CCEA

OCR

Pearson

WJEC

JCQ
CIC

Warning to Candidates

1. You **must** be on time for all your examinations.
2. **Possession of a mobile phone** or other unauthorised material **is not allowed** even if you do not intend to use it. You will be subject to penalty and possible disqualification from the exam/qualification.
3. You **must not** talk to, attempt to communicate with or disturb other candidates once you have entered the examination room.
4. You **must** follow the instructions of the invigilator.
5. You **must not** sit an examination in the name of another candidate.
6. You **must not** become involved in any unfair or dishonest practice in any part of the examination.
7. If you are confused about anything, only speak to an invigilator.

Next steps - Exams Information

Bring, as appropriate:

- Two black pens**
- Calculator (unless prohibited for the exam)**
- Highlighter**
- Ruler**
- Pencil and eraser**
- Clear pencil case**
- Clear water bottle - no label, logos or measurements**

Don't bring:

- Mobile phone**
- Watch of any sort**
- iPod or any electronic device**
- Smart glasses**
- Correcting pens or correcting fluid**
- Calculator lids or instruction**
- Dictionary**
- Notes**

Next steps - Exams Information

Students are in exam conditions from the time they enter the exam venue, until they leave the exam venue

Listen to and follow the instructions given to you by the invigilator at all times

Alert an invigilator to a problem immediately

Put up your hand to attract invigilator if you need something

Do not write anything inappropriate in your answer booklet such as a swear word or offensive language.

Do not try and be funny; answer the questions appropriately

Offensive language or inappropriate answers will be considered malpractice.



GUIDANCE FOR STUDENTS & PARENTS

EXTERNAL EXAMINATIONS

Medina College - Centre No: 59022

I

This information is to help you, with valuable advice for examinations held at Medina College

You are required to read this document carefully and retain it for future reference

If you have **ANY** questions or problems, please contact the Exams Office

We want every student to have the opportunity for every mark in every paper, in every subject count.

The sanctions applied by the exam boards **can include:**

1. a warning;
2. loss of all marks gained for a section;
3. loss of all marks gained for a component;
4. loss of all marks gained for a unit;
5. disqualification from the unit;
6. disqualification from all units in one or more qualifications taken in the series;
7. disqualification from the whole qualification;
8. disqualification from all qualifications taken in that series;
9. barred from entering for examinations for a set period of time.

We do not decide the sanction, the exam board will do that based on the malpractice that has been reported.

Next steps - Exams Information

It is **normal** to find exams stressful

Read the information on the front of the exam paper

Read each question carefully

If you get stuck move on

Check all of your answers again at the end

Do your best

The Year Ahead

How to Prepare

Additional Support

Next Steps